

**EMGETON**®

1951-2006



# **MP3 Emgeton MiniMax3 User's Manual**

## Thank you for purchasing product Emgeton MiniMax 3

Please, read this manual carefully before use and keep it for future reference.

### Generally

- EMGETON is a registered trademark of Bell Technology Ltd.
- This product is intended for personal use only and may not be used for any commercial purpose
- This manual is subject to the copyright laws. All rights reserved. It is strictly prohibited to copy or modify this manual or its parts without a prior written permission of Bell Technology Ltd.
- Bell Technology Ltd. complies with the laws and regulations related to records, videos and games. Complying with all other laws and regulations regarding the consumer use of such media is the responsibility of the users.
- Users of the EMGETON devices are strongly encouraged to complete the customer registration at <http://forum.emgeton.com>. This way they will get an access to the special services provided by EMGETON, which are offered only to officially registered customers. These web pages provide plenty of information and news about the device.

### Note

- The examples, texts, illustrations and pictures provided in this user manual are subject to change without prior notice in case of new product enhancements becoming available.



is registered trademark of SRS Labs, Inc.

SRS, Trubass, FOCUS and Headphone technology is incorporated under the license from SRS Labs, Inc.

---

Copyright Notice	2
Contents	3
Features and Specifications, Package Contents	4
Identifying the Parts	5
Description of Display	6
Basic Instructions	7
Device Operation	8-12
Device Configuration	13-14
Software	15
Upgrade firmware	16
Information about Disposal	17
Precautions	18
Troubleshooting	19
Contacts	20

Dimensions	30 x 68 x 17,5 mm
Weight	42 g (incl. battery)
Memory	512 MB / 1 GB / 2GB / 4GB
Supported file formats	- playback MP3, WMA, OGG (Q0-Q10), ASF, WAV, JPG, TXT - record MP3
Frequency response	20 Hz - 20 kHz
Speaker	500 mW built-in
Earphone's Output	2x 20 mW
S/N Ratio	> 90 dB
Harmonic Distortion	< 0,1%
FM tuner	87,5 - 108 MHz, 20 předvolieb
Tuner S/N Ration	65 dB
Display	LCD 65 000 colors, 96x96 pixels
Languages	Czech, English and German
Power Supply	Built-in recharg. Lithium Polymer battery
USB Interface	USB 2.0
Operational Temperature	-5°C ~ 40°C
Compatibility	WinME and higher, MacOS 9.2 and higher



Earphones



Line-in cable



USB cable



Adapter (optional)



Installation CD



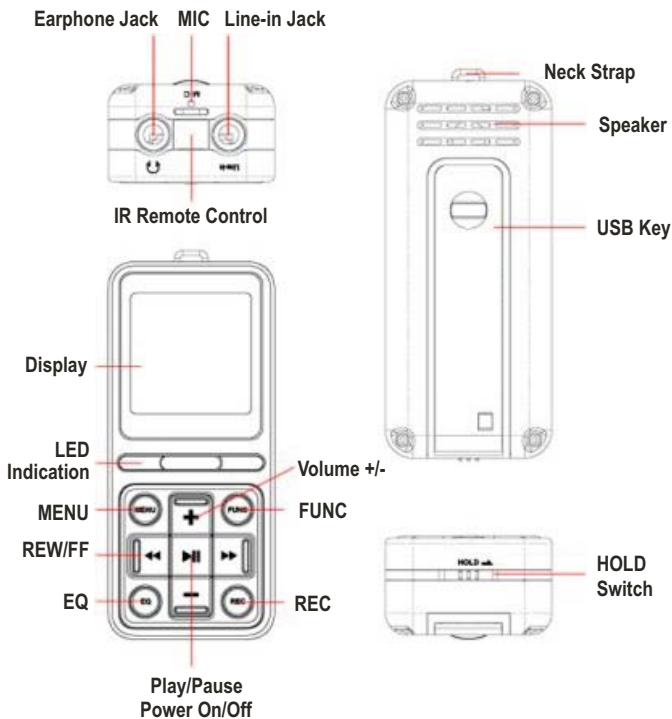
Necklace



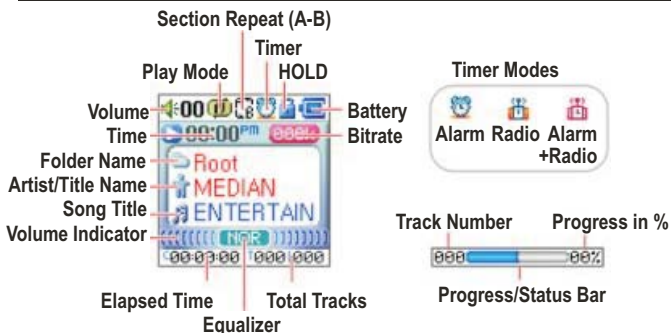
User's Manual



Pouch (optional)



*The device is powered by a built-in Lithium-Polymer rechargeable battery. The battery is a consumable supply and its performance may decrease over the time due to the depreciation. The operation life of the rechargeable battery may be shorter than the guarantee life period of the device. It is not a manufacturing defect and therefore it cannot be a valid reason for a complaint.*



## Main Menu

Press the button **▶||** to turn on the player. By pressing the MENU button you will enter the main menu. Select the desired mode using the **◀▶** and confirm by pressing **▶||**.



MUSIC



FM RADIO



RECORD



REC. PLAY



IMAGE  
VIEWER



TEXT  
VIEWER



ENTERTAINMENT



SETTING

## **Charging the battery**

Turn on your computer and connect your device to its USB port either by the USB cable (supplied) or directly. The charging indicator will light up red. Charging takes about 4 hours in the standard mode and 2 hours in the fast charging mode (when the HOLD switch is at "ON"). After the charging is finished, the indicator will light up green.

### **Caution:**

*Make sure you disconnect the device from the computer after the charging is finished. The player, even if switched off, still consumes a certain amount of energy to power the internal clock. If the capacity of the battery is exhausted, the clock will be reset.*

## **Connection to a PC and driver Setup**

Turn on your computer. If your computer is equipped with Windows ME/2000/XP, the player will be automatically recognized as another drive unit (for example F:\) after it is connected to the USB port. In case the operation system Windows 98, install the driver supplied by the Installation CD before connection the player.

## **Memory Management**

You can use the device the same way as any other disc or storage medium. Excluding the music data it is possible to store any type of files, copy, move or erase them using for example the Windows Explorer.

## **Disconnecting the player from a PC**

Before disconnecting the device from the USB port, make sure you have done following steps:

- 1) Click with the left-mouse button on „USB connection“ icon.
- 2) Select „Safely Remove Large Capacity USB Memory device – drive (X:)“ („X“ states for the device description in the systems). After the confirmation dialogue it is possible to safely disconnect the player.

*Keeping these instructions will assure safe sign-off of the device from the system. In other case loss of the data and memory damage is possible.*

## **Locking-up controls**

To make buttons inoperative and prevent unwanted action of the device, activate the HOLD function. The lock symbol will appear on the display and buttons will be deactivated. To activate buttons deactivate the HOLD function by moving the switch to the opposite direction. The lock symbol will disappear.

## MUSIC

### Playing and selecting tracks

Press the **▶||** button to play/pause music. To select previous/next track, press the **◀◀** or **▶▶** buttons. If it is less than 5 seconds played from the current track, after pressing the **◀◀** previous track will be played. If it is more than 5 seconds played from the current track, it will be played from the beginning. If you want to find certain part in the current track, press and hold the **◀◀** or **▶▶** button. By pressing the MENU button you will enter the main menu. Choose desired mode and confirm your selection by pressing the **▶||** button.



### Volume

To adjust volume, press + or – button (volume range: 40 steps). Pressing the button briefly will change the volume by 1 step. Long press of the button will increase/decrease volume continuously.

### Section repeat A-B

If you want to set part of a track to play repeatedly, press briefly REC button at the beginning of the selected part (point A registration). At the end of the part press REC button again (point B registration). The player will then repeat the A-B section until will press REC button again.



### Play Modes

Press briefly the EQ button while listening to the music you can change order of tracks.

- ◆ Normal
- ◆ Repeat current track
- ◆ Repeat all tracks
- ◆ Random order
- ◆ Repeat all tracks in random order

### Equalizer

Press and hold the EQ button while listening to the music you can adjust sound settings. You can choose from 5 different preset and two user defined sound field settings (frequency curve, SRS, TruBass and WOW effects).



### Navigation

By long pressing the MENU button you will enter the Navigator mode, where you can move within files and folders recorded in the device's memory. When you will enter the Navigator mode, cursor will be placed on the last time listened file. Use + and – buttons to move within files in selected folder. To enter selected subfolder, press **▶▶** button. To move to the parent folder, press and hold MENU button.





### Deleting files in Navigator mode

Select desired file by pressing + and – buttons. Press and hold EQ button. Press YES and ►|| button to confirm your selection. If the file is erased, reproduction will be automatically terminated.

### Using playlist

If you want to add an item into a playlist, press + or – buttons to choose the file or folder in the Navigator mode. Press briefly FUNC button to add selection into the playlist. By pressing FUNC button longer you will finish selection. To listen to the content of the playlist, press ►||.

If you want to leave playlist, move cursor at UP-MOVE item in root folder and press briefly FUNC button or select different file or subfolder.

*Note: Playlist is not accessible from Line-In, Voice, FM Radio, i-Text and i-bmp modes.*

### Playing the Folder

This function allows you to listen to the content in selected folder. Press + and – buttons in Navigator mode to choose desired folder and press briefly REC button. On the display will appear FOLDER SELECTED. Press ►|| button to play the content.



To cancel your selection, choose in Navigator mode item UP-MOVE and press briefly REC button. On the display will appear ALL FILES SELECTED.



### Bookmarks

Bookmarks can be used for easy marking specific track or its part into the memory and find it easily afterwards anytime you need it. You can set up to 10 bookmarks.

If you want to save bookmark, while listening to selected track press and hold FUNC button. Press + and – buttons to choose desired memory position. Press REC button to save your setting.

If you want to recall specific bookmark, while listening to the music press and hold FUNC button. Press + and – buttons to choose desired memory position. Press ►|| button to play the track from the marked position.

If you want to erase specific bookmark, while listening to the music press and hold FUNC button. Press + and – buttons to choose desired memory position. Press briefly EQ button.

## Listening to FM Radio

Press buttons ◀▶ to select FM RADIO mode in main menu. Press MENU button to enter the mode. You can use FM tuner in two modes: PRESET and SCAN. You can switch between these two modes by pressing MENU button. Press briefly FUNC button to switch the signal output between earphones and speaker. Press and hold FUNC button to select European, Japan or global frequency region/scale. To mute the sound press briefly ▶|| button.

### PRESET Mode

You can store in preset channels up to 20 FM stations. If you choose the PRESET mode for a first time, by pressing REC button you can automatically find and store FM stations into presets. The device will scan the whole frequency scale and consecutively assign numbers to memorized stations. To switch between presets use ◀ and ▶ buttons.

### SCAN Mode

Press briefly ◀ and ▶ buttons to tune frequency back/forward at 0,1 MHz step. Press and hold buttons to find the nearest FM radio station in chosen direction. You can store the station into memory by pressing REC button. The icon SAVE will appear on the screen.



## Voice/FM Radio/Line-In recording

### FM Radio recording

While listening to the FM radio broadcast press and hold REC button to start recording. Press MENU or ▶|| button to stop recording. The device will return into the FM Radio mode. *(Attention! If there is Line-In cable connected to the player, after pressing REC button you will record external signal, not FM Radio broadcast!)*



### Voice recording

Enter the main menu and select RECORD. Recording will start immediately after button ▶|| is pressed. Press MENU or ▶|| button to stop recording.



### Immediate voice/Line-In recording

In case you need to start voice or Line-In recording immediately without using menu, press and hold REC button in play mode. Recording will start immediately through the built-in microphone or Line-In input (it depends if the Line-In cable is connected or not). Press MENU or ▶|| button to stop recording.



## Listening to recorded files

Listening to recorded files

If you want to listen to files you have recorded, enter the main menu and select **REC.PLAY**. By pressing buttons find the file you want to play.

Press briefly **PLAY** button to start listening.



Press and hold **MENU** button to return to main screen again.

Note: Files stored in the Voice recording mode are saved as Vxxx

Files stored in the FM Radio mode are saved as Fxxx

Files stored in the Line-In mode are saved as Lxxx



## View the picture and text files

### View the picture files

Enter the main menu a by pressing **◀▶** buttons select **IMAGE VIEWER**. Confirm your selection by pressing **▶||** button briefly. In the Navigator mode you can see your picture

files as a content of the **i-BMP**

folder. Press +/- buttons to choose the picture you want to view on the screen and confirm your selection by pressing **▶||** button. Press briefly **MENU** button to return to the main menu.



### View the text files

Enter the main menu a by pressing

**◀▶** buttons select **IMAGE**

**VIEWER**. Confirm your selection

by pressing **▶||** button briefly.

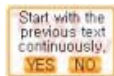
In the Navigator mode you can see your picture files as a content of the **i-TEXT** folder.

Press +/- buttons to choose the text you want to view on the screen and confirm your selection by pressing **▶||** button. Press briefly **MENU** button to return to the main menu.

You can view texts while listening to the music.



Press **▶||** button to switch on automatic paging. Press **▶||** to turn the automatic paging off. If you need to interrupt reading the text and want to continue later, when selecting the same file device will ask you whether you want to continue in reading (illustration on the right). By selecting "YES" you will move to the page you interrupted your reading. Selection "NO" will open the file on the first page.



## Other functions – Entertainment

### IR remote control

To activate IR remote control, choose in the main menu item ENTERTAINMENT and select in sub-menu item REMOTE. Controls on the device have got following functions:

**+/-**: volume setting

**◀▶**: channel selection

**EQ**: Power on/off

**FUNC**: producer/model selection



Press **FUNC** button to select producer and model of the device you want to control via your player. Model M3 has got about 300 definition files for different devices at this moment. The whole list is possible download at <http://forum.emgeton.com>. Definition files have to be saved into IR folder.

### Blackjack

If you want to play this cardboard game, enter the ENTERTAINMENT mode and select Blackjack. This game is played with 52 cards. Each player can get maximum 7 cards. You can finish your draw anytime, even with only two cards. If the total value will exceeds 21 points, you lose. You lose as well when you have the same score as the one who has distributed cards.

During the game are available commands HIT (take another card), STAY (show cards) and DOUBLE (doubling your bet). You choose commands by pressing buttons **◀▶**.

### BioRhythm

Every day you can check your health, emotional and psychological condition. By pressing +/- and **◀▶** buttons enter your birthdate and press **▶||** to confirm the entry. Then you will see on the screen appropriate indexes and trends. If you want to enter another date, press briefly REC button.

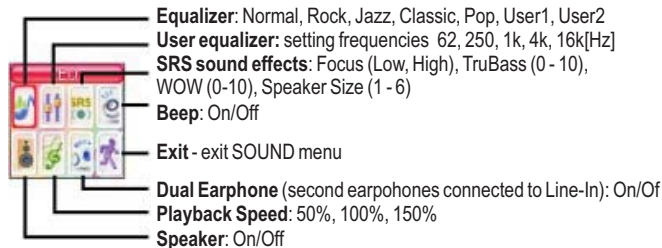


## Setting up your MP3 Emgeton MiniMax3

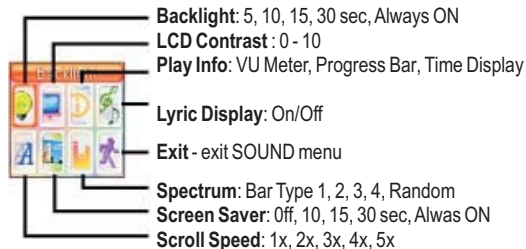
Return to the initial screen, press briefly MENU button and use ◀▶ buttons to select item SETTINGS. Press ▶|| button to enter the mode. Press MENU button to return to higher menu. Press and hold MENU button to return to initial screen.MENU.



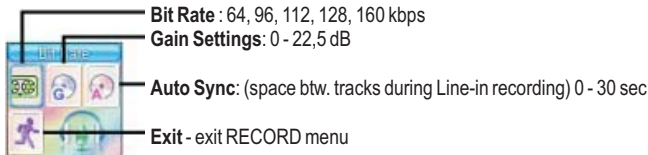
### SOUND



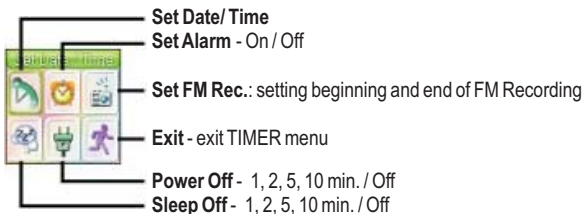
### DISPLAY



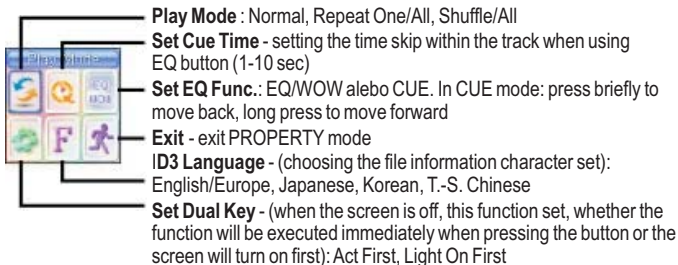
## RECORD



## TIMER



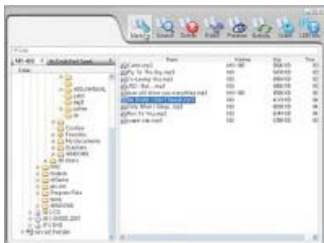
## PROPERTY



## LDB Lyrics Manager

You can use the LDB Lyrics Manager to modify and enter lyrics into your music files. To install the program insert installation CD into the CD-ROM drive. Select LDB Lyrics Manager on the Initial screen. To continue installation, follow instruction on the screen.

Click the icon on the desktop screen or select the item in Start menu to start the application. Check selection of the device model in the left window. Then find the folder with music files. In the right window you can see content of the selected folder with information about Lyrics data for certain models, size of the file and duration time. Click on the Marking icon to set the flag that marks the file which should be ready for using Lyrics in the player Emgeton MiniMax3.



Click on Search for searching Lyrics in the internal database of the program. Put the artist's and song name into the window and click on the Search button on the right. To link correct text to the file choose one of the allocated files. Select Marking and click on OK button to confirm your selection. If you want to delete Lyrics from the selected file, click on Delete and then on YES to confirm selection.



Press icon OPTION to choose action for ID3 Tag when during selection of files. Program can automatically change content or the ID3 Tag (ID3v1 Tag modifies), or leave ID3 Tag without changes (ID3v1 Tag doesn't modify), or create new ID3 Tag, if it does not exist (if ID3v1 Tag doesn't exist, it writes).

## Image&Logo Converter

The program allows very simple conversion of pictures and digital photos into the right size and format, so it will be possible to view them on the device screen. You can also use system logos. It is possible to rotate, sharpen, invert, change brightness and contrast of a picture. Files can be stored either in your PC, or you can send them directly from to program into the device memory (File -> Send Image to player).

### What is Firmware?

Firmware is a program embedded in hardware to control various functions of the hardware. Through firmware upgrades, product features can be enhanced and bugs corrected.

### Limitation of Liability and Legal Notice Regarding Firmware

- 1) The performance and menus of iAUDIO are subject to change without prior notice through regular or beta versions of firmware upgrades supplied by the manufacturer.
- 2) When you perform a firmware upgrade, all the data stored in flash memory is deleted. Therefore, it is the user's responsibility to manually backup MP3 files and important recordings saved in the player.
- 3) All firmware upgrades are for overall improvement of performance, and upgrades will be provided at Cowon's discretion.
- 4) Some beta firmware released according to our development roadmap may contain minor glitches to be corrected in regular firmware. This possibility is announced here in advance.

**Below mentioned description can vary according to the different firmware versions.**

**Therefore we recommend before the installation to download the newest version including up-to date instructions that are available free of charge at our web pages <http://forum.emgeton.com>. For successful firmware installation you need program for firmware upgrade and file with firmware data.**

**To install the firmware upgrade, follow instructions mentioned below**

- 1) Turn off the device.
- 2) Connect the device to a PC via the USB cable. The player is displayed in "My Computer" as "Mobile Disk".
- 3) Decompress the downloaded files and move them into "Mobile Disk" window. (Before you will start an upgrade, make sure the downloaded firmware is the same as your player model number).
- 4) Choose the function "Safely Remove Hardware" on your PC. Update will be finished. After the upgrade is done, restart the device. Then select either "Firmware Update", or "Font Update". Relevant program will be automatically upgraded in your player.

More information and instructions about firmware upgrade and its application you will find on our web pages <http://forum.emgeton.com>, or you can contact our service center (for reward).

Contact of the service center is at <http://www.emgeton.com>.





Information for users about disposal of electric and electronic devices

Above mentioned symbol on the device or supplied documentation means that used electric or electronic devices must not be disposed together with municipal refuse. To keep the right way of disposal of such devices, please, hand over them at assigned collection points, where they will be accepted free of charge. By the proper disposal of this product you will help to protect natural resources and preserve potential negative influence on the environment and human health. Further information is available at your local authority or at the closes collection point.

In case of improper disposal of this kind of waste you can be fined according to regulations valid in your country.

**Avoid any excessive force or impact on the device**

Shocks that appear when walking or jogging do not have influence on the player, but dropping heavy object on the device could cause damage or decrease significantly quality of reproduction.

**When the device is not used for a longer period, do not store it on place where it will be exposed to:**

- extreme moisture
- strong magnetic field
- extreme temperatures
- direct sunlight or near sources of excessive heat

Do not leave the device on a dashboard or other places in your car, if the air circulation is not assured.

When playing music files or in other operational mode do not expose the device to shocks. It could cause damage or erasing of the data. Do not try to dismount or repair the device. Do not turn the player at locations where operation of electric devices is prohibited. Do not use the device while driving a car. Back up data from your player regularly in your PC. Any damage, caused by electric discharge, static electricity, battery change or improper use, could be the reason for damage or erasing of the data in your device.

**Warranty conditions:**

- Warranty does not cover mechanical damage and improper use, for example damage of a button caused by excessive force, broken jack connector caused by pulling earphones cable, broken display, damaged parts caused by falling the device, etc.
- Warranty also does not cover wrong function of the device caused by any kind of damage of internal memory structure or firmware, for example because of wrong file usage, damaged MP3 files, etc., improper disconnection from the PC or other digital device, etc.

**Your device is not maintenance-free**

It is combination of sophisticated hardware and utility software (firmware) stored in the bootable part of the device memory. Firmware could be broken or damaged by improper use. In such case some functions would not function in proper way or the player will be switched to the recovery mode. In such case it is necessary to recover firmware according to the instructions from the manufacturer by new installation or the same or more recent version.

Detailed informations and instructions about the firmware installation and use are available at the address <http://forum.emgeton.com> or you can contact our service center (for reward). Contact of the service center is at <http://www.emgeton.com>.

I cannot turn on the player	Check the right polarity of the battery. Check the battery if it is fully charged. Remove the battery and put it back into the device after a while.
No sound can be heard from the earphones	Check if the volume is set to „0“. Check if the remote controller and earphones are connected properly to the player. Check if there are any substances blocking connection. If so, clean it by dry cloth. Damaged MP3 or WMA file can cause static noise and sound dropping. Use your PC to check if files are not corrupted.
Characters on LCD are corrupted	Check if the proper language and character set has been
Poor FM Radio signal reception	Adjust position of the device and earphones. Turn off electric devices near the device. Earphones serve as an antenna.
Neúspešné sťahovanie MP3 súborov	Check the battery. Check if the connection between PC and player is correct and if the cable is not damaged. Check if the device memory is not full.
The player does not work properly	Install again the appropriate firmware.
Wrong sound reproduction	
There are interruptions during the listening	
Device does not respond.	
After turning the device on it stops at the initial logo or restart itself.	Install again the appropriate firmware in recovery mode.

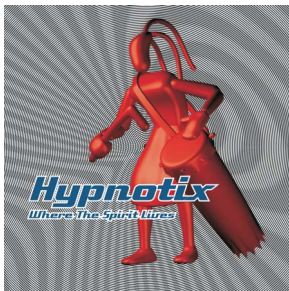
If there will be no improvement after applying above mentioned instructions, please, contact your nearest retailer or distributor of your player.

## Emgeton supports promising Czech musical bands

### In the Emgeton MiniMax3 player

you will find one song and on the CD-ROM one video-clip from the album "Where The Spirit Lives" from the musical band Hypnotix.

Further information about the band Hypnotix are available at the address [www.hypnotix.cz](http://www.hypnotix.cz)



**EMGETON**<sup>®</sup>

### Service Centre for Czech Republic and Slovak Republic

Bell Technology spol. s r.o.  
Naplavni 3/2012, 120 00 Praha 2  
Czech Republic  
Tel.: +420 224 916 395  
Mobile: +420 724 284 477  
E-mail: [servis@emgeton.com](mailto:servis@emgeton.com)  
Web site: [www.emgeton.com](http://www.emgeton.com)

### Exclusive importeur and distributor for the Czech Republic

Bell Technology spol. s r.o.  
Prubezna 3207 / 74a, 100 00 Praha 10  
Czech Republic  
Tel.: +420 271 731 600  
Fax: +420 267 314 291  
E-mail: [sales@bell-technology.cz](mailto:sales@bell-technology.cz)  
Web site: [www.bell-technology.cz](http://www.bell-technology.cz)

### Exclusive importeur and distributor for the Slovak Republic

Bell Technology spol. s r.o.  
Hubeneho 7, 831 08 Bratislava  
Slovak Republic  
Tel.: +421 244 649 574  
Fax: +420 244 649 576  
E-mail: [sales@bell-technology.sk](mailto:sales@bell-technology.sk)  
Web site: [www.bell-technology.sk](http://www.bell-technology.sk)